

# Z401 Automatic Food Shell Inspection Gauge



Also available in  
**Floor-standing Semi-automatic**



**ELECTRICITY**  
100-240 Volts / 50-60 Hz



**COMPRESSED AIR**  
5 bar / 73 PSI



**WEIGHT**  
430kg



**DIMENSIONS**  
(W) 1270mm x (H) 1729mm  
(D) 1000mm

The Torus Z401 Food Shell Inspection Gauge defines the standard for dimensional inspection of food can shells.

Each food shell to be inspected is automatically collected from a 'stack' and loaded into the gauging module with an integrated pick and place system. The measurement cycle is then initiated via the PC running the TMS GaugeXplorer Measurement and Machine Control software.

## Measurement Features:

Standard Features	Accuracy
Overall Height	+/- 0.015 mm
Metal Thickness	+/- 0.007 mm
Outer Diameter	+/- 0.015 mm
Countersink Depth	+/- 0.015 mm
Curl Height	+/- 0.015 mm
<b>Additional Features (Upon Request):</b>	
Curl Opening	+/- 0.030 mm
Inner Curl Diameter	+/- 0.030 mm
Panel Depth	+/- 0.010 mm
<b>Line Scan Laser Features (Optional Upgrade):</b>	
Panel Profile	+/- 0.030 mm

## Technical Specification:

Capabilities	Typical Range
Shell Materials	Aluminium / Steel
Shell Stages	Pre-Curl, Form, Finished
Size Config. 1	100 - 200
Size Config. 2	200 - 211
Size Config. 3*	307 - 603

\*Other Configs are available upon request

**Repeatability Performance Data** (Available upon request)

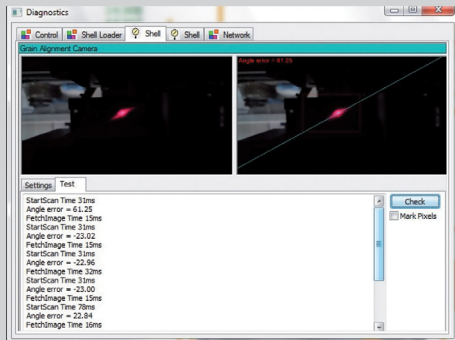
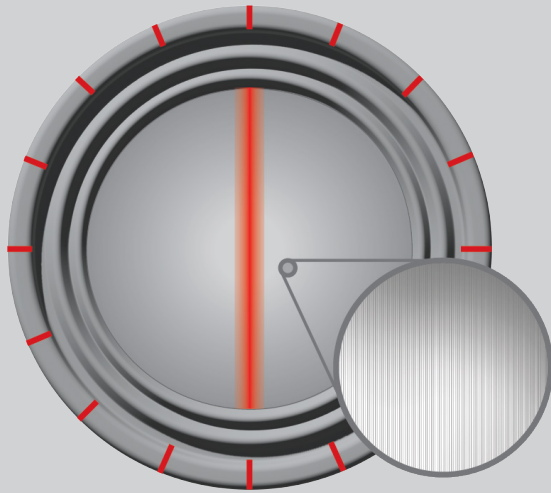
## Benefits to your business

- Fast and accurate measurement data
- No change parts
- Can be supplied for a single-fixed diameter of food shell, or for facilities producing multiple sizes (Please refer to the size config table below) A fully automatic adjustable version is available
- Operator can define which features are inspected at up to 16 selectable positions
- Pre-curl and finished shells can be measured with no mechanical changeover
- Hopper type handling system, one or two load/unload hopper cassettes (stack of shells up to 98mm height)



# Options and Features

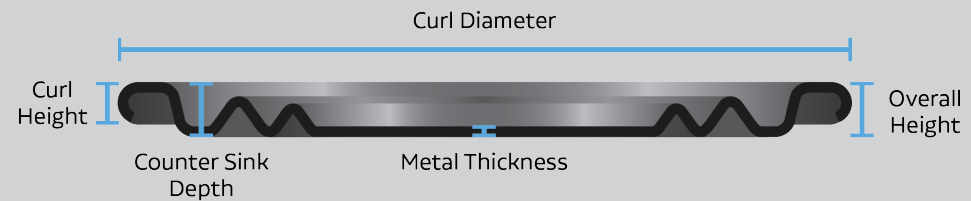
## Automatic Grain Alignment



The Grain Alignment option allows operators to gain information of where exact measurement points are taken, allowing for precise tooling adjustment to be made where required.

## Technology

### Standard Features:



### Additional Features (Upon Request):

Curl Opening, Inner Curl Diameter, Panel Depth

### Line Scan Laser Features (Optional Upgrade):

Panel Profile, including:

- > Bead Pitch
- > Bead Spacing & Depth
- > Panel Profile Depth
- > First Panel Depth
- > First Bead Height
- > Panel Bead Diameter

