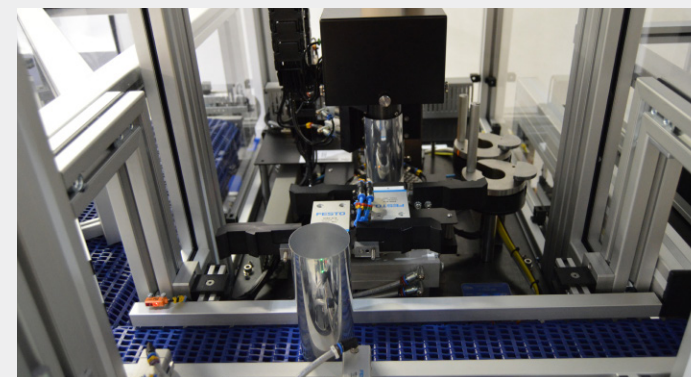


# Z301 Semi-Automatic Trimmed Can Inspection Gauge



The gauge features fixed-top and mid-wall probe positions for multi-positional radial measurement, with a dedicated caliper to ensure the correct top and mid-wall thickness measurement position every time.

The proven contact measurement technology ensures accurate, reliable and traceable measurement 24/7.



## Measurement Features:

Feature		Accuracy
Trimmed Can Height	1-16 positions	+/- 0.010 mm
Top Wall Thickness	1-16 positions	+/- 0.001 mm
Upper Mid Wall Thickness	1-16 positions	+/- 0.001 mm
Lower Mid Wall Thickness	1-16 positions	+/- 0.001 mm
Wall Step		
Dome Depth	Single Point	+/- 0.010 mm

## Technical Specification:

Capabilities	Typical Range
Can Range	202 - 307 body diameters
Can Materials	Aluminium/Steel
Can Height Range	87 - 210 mm
Can Dome Depth Range	9 - 13 mm
Can Wall Thickness Range	0 - 1 mm

Repeatability Performance Data - available upon request

## Benefits to your business

- Speed and accuracy
- Confidence in your production process
- Modular concept to cater for future upgrades
- Cost-effective upgrade path for additional modules to be added
- Future upgrade path to automatic

**ELECTRICITY**  
100-240 Volts / 50-60 Hz

**COMPRESSED AIR**  
5 bar / 73 PSI

**WEIGHT**  
450kg Max

**DIMENSIONS**  
(W) 1390mm x (H) 1780mm  
(L) 1520mm

[Click here to view the video](#)

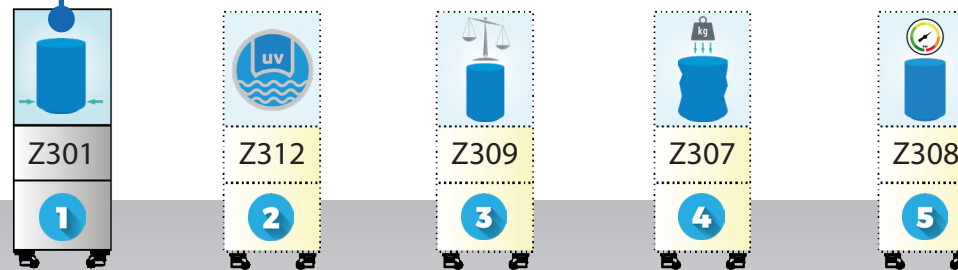


# Customise your Gauge

Our modular gauge setups are unique and allow you to customise your gauge as and when you require, giving you the flexibility to ensure you have a total quality solution.

**1** Start with the standard **Z301 Trimmed Can Inspection Front End Gauge**

**2** Add any of the below optional modules at any time.



## **1** Additional Options

- Outer Body Dia. Inspection module - 1-8 rotational positions
- Accuracy: +/- 0.025mm

## **2** Vision Module (For detailed information see Z312)

- Quality percentage of UV Base RIM Coat (BRC) lacquer presence

## **3** Trimmed Can Weight Module

- Determines can weight
- Meets industry standard
- Resolution: 0.001g

## **4** Axial Load Module

- Determines the maximum axial load force that can be applied prior to container failure
- Accuracy: +/- 10N

## **5** Dome Growth/Dome Reversal Module

- Provides detailed information about the overall change in length of can when pressure is applied and subsequently removed
- Accuracy: +/- 0.10mm
- Accuracy: +/- 0.05 bar