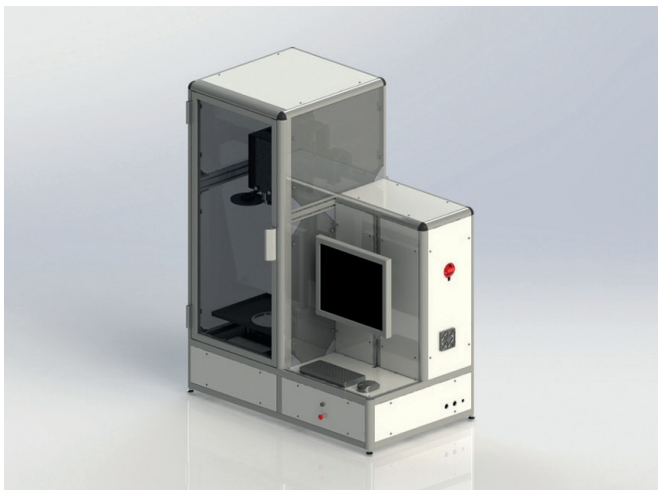


B304 Semi-Automatic Aerosol Top Load, Volume and Weight Gauge



Also available as:

Automatic Module with the Torus TQ Lab

The B304 Aerosol Semi-Automatic Top Load, Volume and Weight gauge has been developed to provide combination testing capabilities in volume capacity and vertical and horizontal strength.



POWER

100-240 Volts / 50-60 Hz



WATER

1-2 BAR / 60 - 120 ppm / 0.2 mS - 0.8 mS



COMPRESSED AIR

6 bar / 87 PSI



DIMENSIONS

(W) 1065mm x (H) 1440mm x (D) 810mm

The system has been designed to provide measurement capability for several industry standard tests within the same program, significantly reducing part setup and part cycle times. Torus' batch setup process enables the operator to quickly move between test types.

Measurement Features:

| Feature | | Accuracy |
|---------------------|-------------|------------|
| Dry Top Load | N, kgf, lbf | +/- 5.0 N |
| Wet Top Load | N, kgf, lbf | +/- 5.0 N |
| Side Load | N, kgf, lbf | +/- 5.0 N |
| Deflection Point | mm | +/- 1.0 mm |
| Brimfull (Overflow) | ml | +/- 1.0 ml |
| Fill Height | ml | +/- 1.0 ml |
| Vacuity (Headspace) | % | +/- 1.0 % |
| Empty Bottle Weight | g | +/- 1.0 g |
| Temperature | °C | +/- 1.0 °C |

Technical Specification:

| | |
|-------------------------|----------------------------|
| Material Types | Aluminium/Steel |
| Fill Height from TOF | ≤ 65 mm (+ on application) |
| Component Neck ID | ≤ Ø 13 mm - 145 mm |
| Component Height Range | ≤ 400 mm |
| Component Body Diameter | ≤ 200 mm @ base |
| Component Max. Load | ≤ 2500 N (250 kgf) |
| Compression Range | 0 - 50 mm |
| Selectable Test Speed | 0.5 - 510 mm/min |

Volume Inspection Options:

| | |
|----------------|-----------|
| Standard Range | ≤ 3000 ml |
| Advanced Range | ≤ 5000 ml |

Reporting options such as standard CSV or Statistical Process Control (SPC)

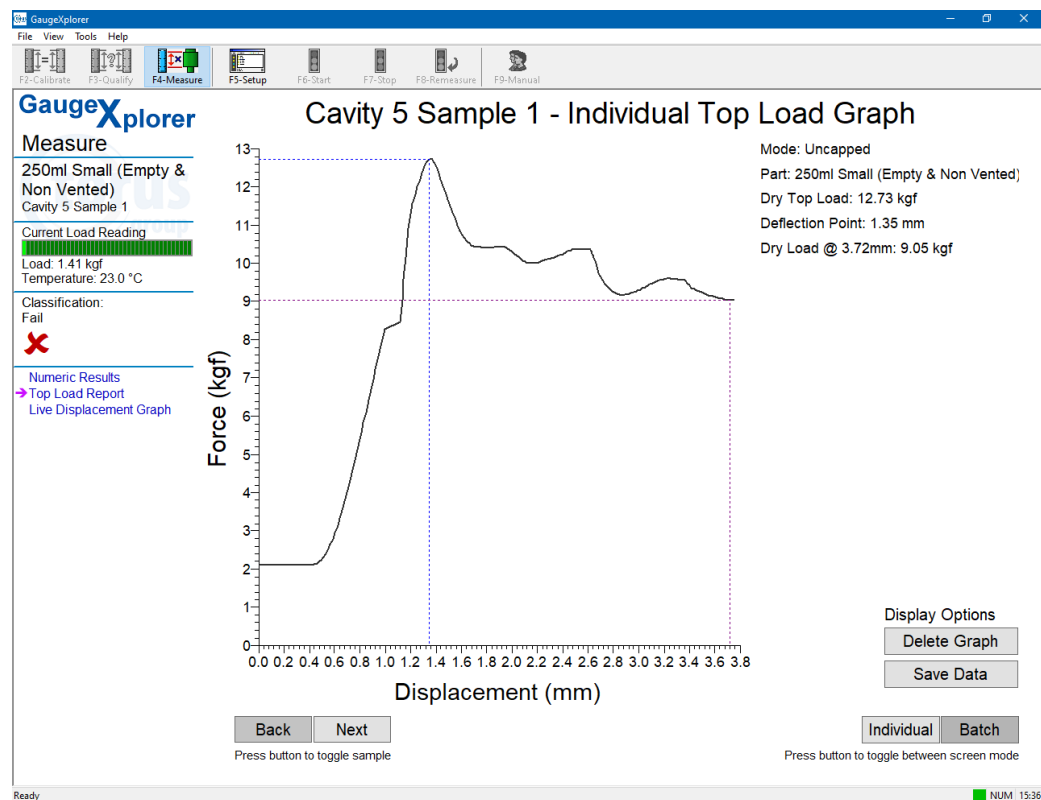
Traceable to UKAS Standards.

Benefits to your business

- Tests adhere to ASTM D2659 standard
- Top load tests can be completed, sealed, vented or capped
- Scan until dip functionality to stop test once elastic limit is passed to reduce cycle time
- Side load (horizontal load) testing functionality
- Top of finish detection for accurate and repeatable fill height and brimfull (overflow) fill positions
- Volume and wet compression testing completed in one part program cycle
- Water service packages to support hard and soft water conditions at customer facility



Individual Top Load Report



Batch Top Load Report

