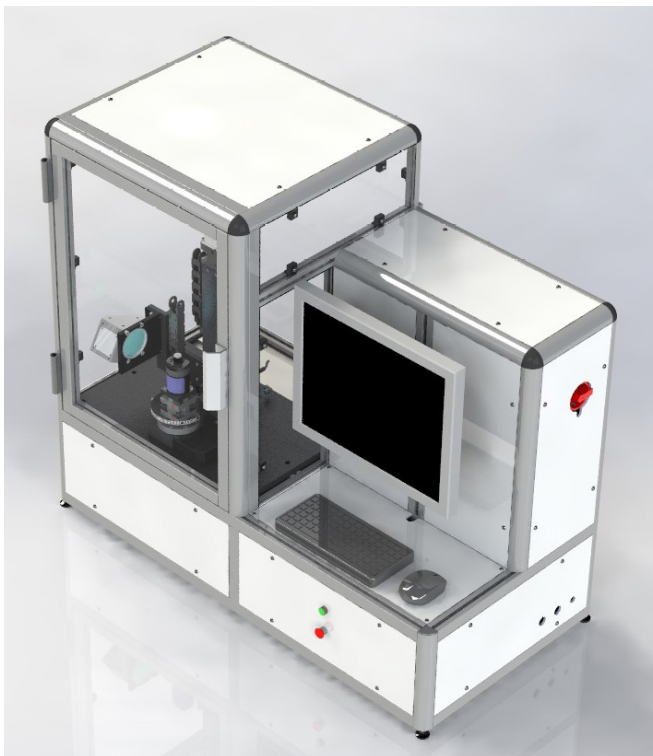


B301 Semi-Automatic Aerosol Optical Inspection Gauge



The B301 Semi-Automatic Optical Inspection Gauge has been developed to provide a fast, non-contact, traceable measurement solution for neck finish and body dimensions.

Using state-of-the-art optical telecentric lens technology, the system takes advantage of a self-teach profile function for part program generation.

Interchangeable location tooling provides the capability to perform dimensional inspection on a wide range of industry standard neck finish types.

Reporting options such as standard CSV or Statistical Process Control (SPC)

Certification to UKAS Standards.

Measurement Features:

Feature	Accuracy
Optical Features: Includes: Diameters, Heights, Pitch, Depth, Intersections, Angles	+/- 0.030 mm

Technical Specification:

Material Types	Aluminium/Steel
Compound Outer Neck Dia.	≤ Ø 40 mm
Compound Internal Neck Dia.	Ø 8.00 mm - Ø 37.00 mm
Compound Height Range	≤ 165 mm
Compound Body Dia.	≤ 40 mm

Benefits to your business

- › Quick-snap pre-programmed industry standard features
- › Programmable neck features for full measurement flexibility
- › Up to 16 rotational diameter positions
- › Self-teach Profile Scan Function
- › Fast cycle time
- › Mimic display screens



POWER

100-240 Volts / 50-60 Hz



COMPRESSED AIR

5 bar / 72.5 PSI



DIMENSIONS

(W) 1130mm x (H) 1030mm x (D) 600mm

