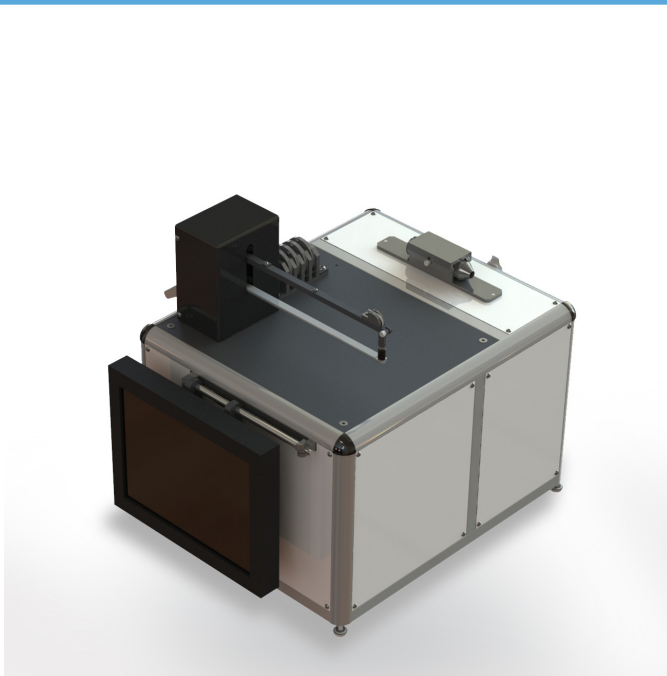


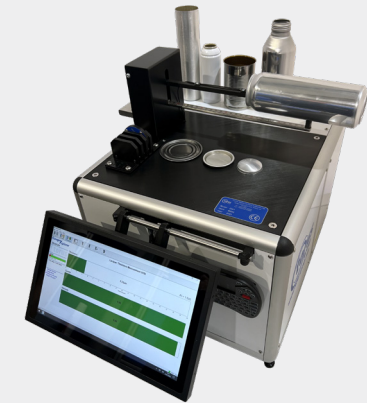
# Z341 Manual Beverage Can Coating Analyser







The Torus Measurement Systems Manual Coating Analyser has been developed to give fast and accurate measurement of the internal lacquer, sprayed during today's 2 and 3 piece can manufacturing process.

By cutting the can to give suitable access, the dome area of the can is able to be checked by the system.

No "lacquer panels" are required for calibration and measurement data can be exported via on board USB or LAN ports to your factory data acquisition systems where required.



-  **ELECTRICITY**  
100-240 Volts / 50-60 Hz
-  **COMPRESSED AIR**  
N/A
-  **WEIGHT**  
Estimated 25kg
-  **DIMENSIONS**  
(W) 630.5mm x (H) 252mm  
(D) 300mm

### Gauge Features:

Dual system equipped with two spectrometers -

> Visible light and Near Infrared (NIR) light, enables the OV/over ink inspection

### Measurement Features:

Feature	Accuracy	Capability
Internal Lacquer	+/- 0.2 µm	0.4 µm
External Lacquer	+/- 0.2 µm	0.4 µm

### Technical Specification:

Capabilities	Typical Range
Body Diameter	Ø 202 - Ø 307

## Benefits to your business

- > Simple, manual positioning by the operator ensures side wall measurements are immediately displayed on the embedded mini touch screen PC
- > Cans from (202) - (307) body diameter can be accommodated by the systems "scissor" action location fingers, operated at the push of a button
- > "Non-contact" means no wear parts, and the use of a non-contact "white light spectroscopy" technique guarantees unprecedented performance

