

Z340 Semi-Automatic Bench-Top Beverage Can Coating Analyser



Also available in
Automatic



ELECTRICITY
100-240 Volts / 50-60 Hz



COMPRESSED AIR
N/A



WEIGHT
59kg



DIMENSIONS
(W) 400mm x (H) 980mm
(D) 430mm

The Z340 Semi-Automatic Bench-Top Coating Analyser has been developed to give detailed distribution analysis of the internal and external lacquer on a beverage can.

The system utilises state-of-the-art non-contact spectroscopy techniques and is suitable for both aluminium and steel can inspection.

Measurement Features:

Feature	Accuracy	Capability
Internal Lacquer	+/- 0.2 µm	0.4 µm
External Lacquer	+/- 0.2 µm	0.4 µm
Rim Coat Lacquer	+/- 0.4 µm	0.8 µm

Technical Specification:

Capabilities	Typical Range
Beverage Can Materials	Aluminium
Can Stages	Trimmed, Finished, Reformed
Outer Body Diameter	Ø 202 - Ø 211
Trimmed Can Height	90.00 - 190.00
Finished Can Height	90.00 - 190.00

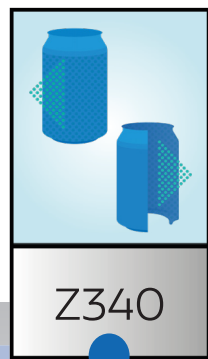
Gauge Features:

Internal Lacquer Thickness/Weight
External Varnish Thickness/Weight/OV (Over ink)
Rim Coat Lacquer Thickness/Weight
Reverse Wall Inspection

Benefits to your business

- Dual system equipped with two spectrometers - **Visible light and Near Infrared (NIR) light**, enables the OV/over ink inspection
- Brand-new fibre set up creating a smaller spot size to optimise measurement of rim coat and reverse wall, both with dedicated tooling to enable precise location of measurement positions on both features
- Enables monitoring and control of the lacquer distribution
- Absolute, not inferred, lacquer thickness measurement
- High positional accuracy, ensuring true location of measurement points
- Multi-size capability so no need for change tooling.
- Traceable measurements to NIST standards

Customise your Gauge



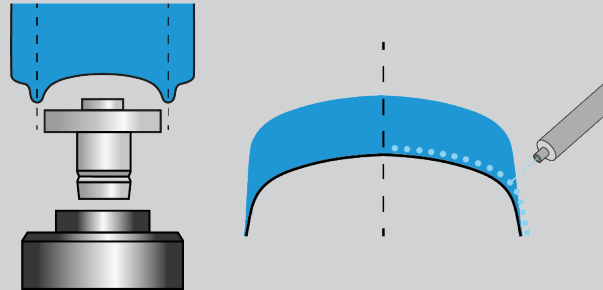
1

Start with the standard **Z340 Semi - Automatic Bench-Top Beverage Can Coating Analyser**

2

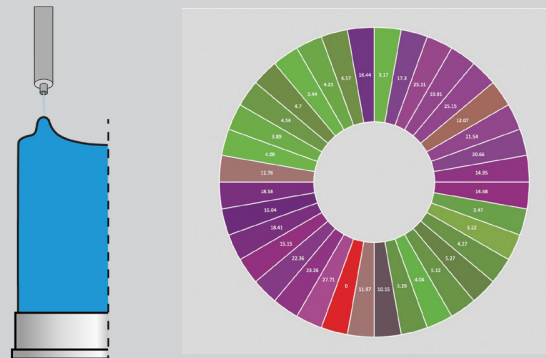
Add any of the detailed optional modules at any time.

3 Reverse Wall Lacquer Distribution (Manual Loaded Tooling)



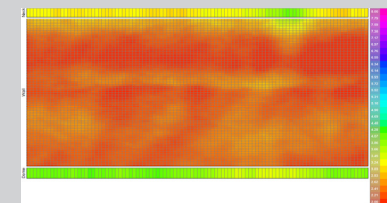
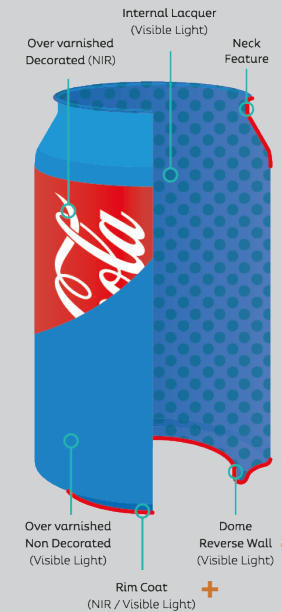
Manually sectioning the dome area of the straight walled can, enables the operator to collect complete dome profile and reverse wall lacquer distribution analysis.

4 Base Rim Coat (BRC) Lacquer Distribution



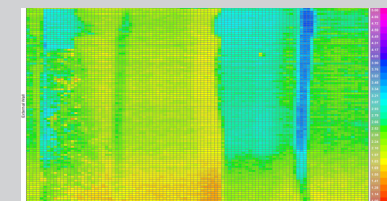
By using the latest Torus inspection techniques, detailed base rim coat distribution data can be attained.

Standard and Additional Features



Detailed Colour Maps

Internal Lacquer Distribution Map



External OV Distribution Map