

Z340 Automatic Beverage Can Coating Analyser



Also available in
Floor-Standing Semi-Automatic



ELECTRICITY
100-240 Volts / 50-60 Hz



COMPRESSED AIR
5 bar / 73 PSI



WEIGHT
580kg



DIMENSIONS
(W) 3495mm x (H) 1679mm
(D) 1060mm

The Z340 Automatic Coating Analyser has been developed to give detailed distribution analysis of the internal and external lacquer on a beverage can.

The system utilises state-of-the-art non-contact spectroscopy techniques and is suitable for both aluminium and steel can inspection.

Measurement Features:

Feature	Accuracy	Capability
Internal Lacquer	+/- 0.2 µm	0.4 µm
External Lacquer	+/- 0.2 µm	0.4 µm
Rim Coat Lacquer	+/- 0.4 µm	0.8 µm

Technical Specification:

Capabilities	Typical Range
Beverage Can Materials	Aluminium
Can Stages	Trimmed, Finished, Reformed
Outer Body Diameter	Ø 202 - Ø 300
Trimmed Can Height	90.00 - 190.00
Finished Can Height	90.00 - 190.00

Gauge Features:

Internal Lacquer Thickness/Weight
External Varnish Thickness/Weight/OV (Over ink)
Rim Coat Lacquer Thickness/Weight
Reverse Wall Inspection

Benefits to your business

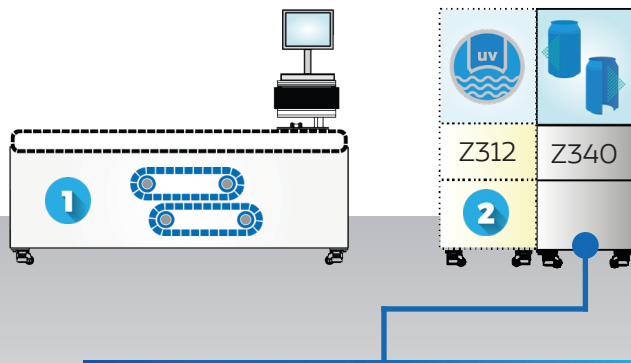
- Dual system equipped with two spectrometers - **Visible light and Near Infrared (NIR) light**, enables the OV/over ink inspection
- Brand-new fibre setup creating a smaller spot size to optimise measurement of rim coat and reverse wall, both with dedicated tooling to enable precise location of measurement positions on both features
- Enables monitoring and control of the lacquer distribution
- Absolute, not inferred, lacquer thickness measurement
- High positional accuracy, ensuring true location of measurement points
- Multi-size capability so no need for change tooling
- Traceable measurements to NIST standards

Click [here](#) to view the video



Customise your Gauge

Our modular gauge setups are unique and allow you to customise your gauge as and when you require, giving you the flexibility to ensure you have a total quality solution.



1 Start with the standard **Z340 Automatic Beverage Can Coating Analyser**

2 Add any of the detailed optional modules at any time.

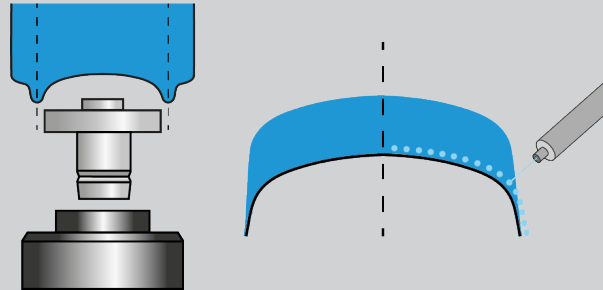
1 Multi-Lane Input Conveyor

- Lane capability typically 24 x 211 body dia. can.
- Single lane - 6 options available.
- Automatic in-line configuration for each lane available.

2 Vision Module (For more information see Z312)

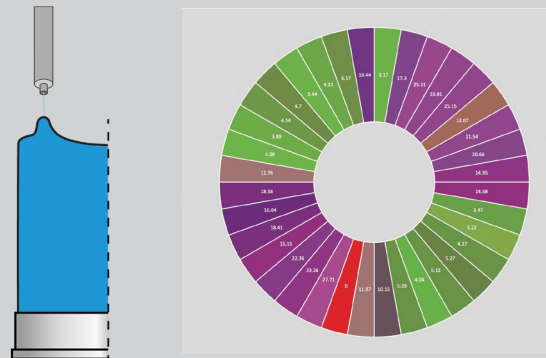
- Quality percentage of UV Base RIM Coat (BRC) lacquer presence.
- Optional Z312 Vision Module available for internal spray gun recognition (ISG).

3 Reverse Wall Lacquer Distribution (Manual Loaded Tooling)



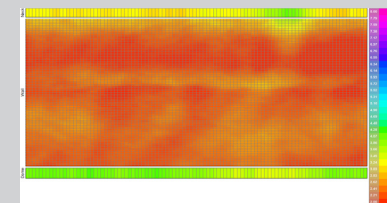
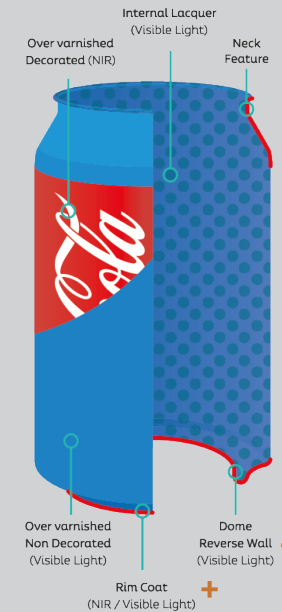
Manually sectioning the dome area of the straight walled can, enables the operator to collect complete dome profile and reverse wall lacquer distribution analysis.

4 Base Rim Coat (BRC) Lacquer Distribution



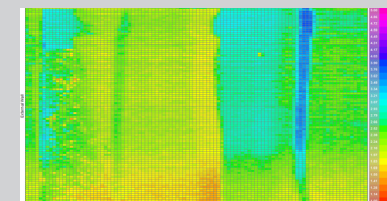
By using the latest Torus inspection techniques, detailed base rim coat distribution data can be attained.

Standard and Additional Features



Detailed Colour Maps

Internal Lacquer Distribution Map



External OV Distribution Map