

Z307 Automatic Food Can Destructive Gauge



Also available in
Floor-Standing Semi-Automatic



ELECTRICITY
100-240 Volts / 50-60 Hz



COMPRESSED AIR
6 bar / 87 PSI



WEIGHT
Estimated 700kg



DIMENSIONS
(W) 4030mm x (H) 1679mm
(L) 1060mm (with 4 lane conveyor)

Torus' Z307 series defines the standard for destructive testing and inspection.

The **Z307 Automatic Axial Load** module determines the maximum axial load force that can be applied prior to container failure, within a short cycle time.

The **Z306 Panel Resistance** module provides detailed information about the maximum panel resistance vacuum pressure the can is able to achieve prior to failure.

Measurement Features:

Feature	Accuracy
Axial Load	+/- 10N
Panel Resistance	+/- 0.5 PSI

Technical Specification:

Capabilities	Typical Range
Can Materials	Aluminium/Steel
Can Stages	Finished, Straight Walled
Can Finished Height Range	87 - 190 mm
Can Outer Body Diameter	Ø 211 - Ø 307
Axial Load	≤ 2000 N

Gauge Features:

Available for both straight walled and finished food cans

Industry standard location platens for component neck support and to ensure parallelism between gauge tooling faces

Selectable crush speed

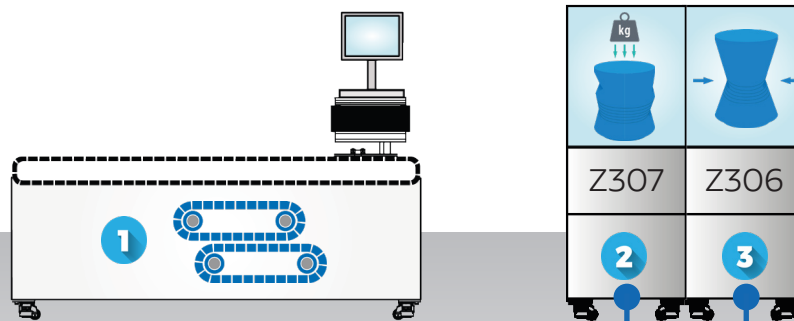
Benefits to your business

- › **Z307:** Multi-size capability with no change tooling
- › **Z307:** Short cycle times
- › **Z307:** Customer-specific data outputs (kgf, lbf, newtons etc)
- › **Z307:** High accuracy axial load cell technology
- › **Z306:** Multi-size capability with no change tooling.
- › **Z306:** Customer-specific data outputs (psi, kpa, lbs etc)
- › **Z306:** High accuracy pressure sensor technology

Click [here](#) to view the video



Customise your Gauge

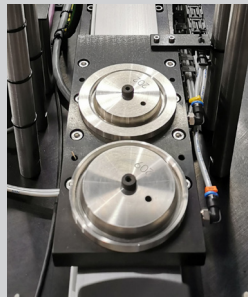


Standard Setup

1. Multi-Lane Input Conveyor - as standard.

- Lane capability typically 24 x 211 body dia. can.
- Single lane - 6 options available.
- Automatic in-line configuration for each lane available.

2. Axial Load Module with Automatic Change Tooling - as standard.



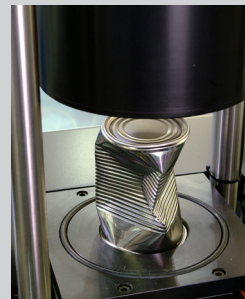
Automatic Change Tooling.

Torus have got you covered for all can size production ranging from Ø 211 - Ø 307 with no change parts within a single module.

Z306 Panel Resistance Module

3. Panel Resistance Module - as standard.

- Determines maximum panel resistance vacuum pressure the can achieve prior to failure.
- **Accuracy:** +/- 0.5 PSI.



Vacuum Chamber

Torus have got you covered for all can size production ranging from Ø 211 - Ø 307 with no change parts within a single module.