

# Z301 Automatic Trimmed Can Inspection Gauge



Also available in  
**Floor-Standing Semi-Automatic**



**ELECTRICITY**  
100-240 Volts / 50-60 Hz



**COMPRESSED AIR**  
5 bar / 73 PSI



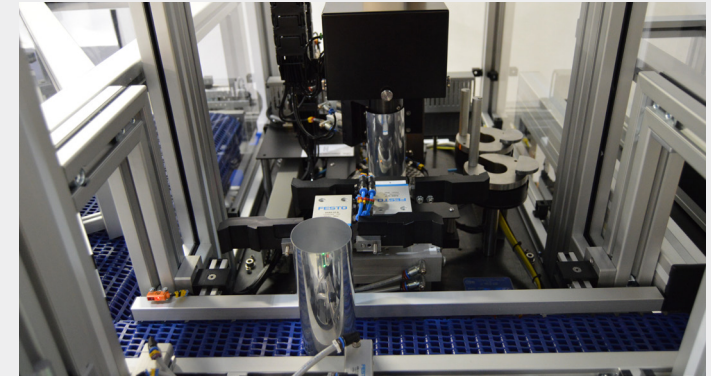
**WEIGHT**  
620kg Max



**DIMENSIONS**  
(W) 1615mm x (H) 1833mm  
(L) 3427mm (with 4 lane conveyor)

The gauge features fixed-top and mid-wall probe positions for multi-positional radial measurement, with a dedicated caliper to ensure the correct top and mid-wall thickness measurement position every time.

The proven contact measurement technology ensures accurate, reliable and traceable measurement 24/7.



## Measurement Features:

Feature		Accuracy
Trimmed Can Height	1-16 positions	+/- 0.010 mm
Top Wall Thickness	1-16 positions	+/- 0.001 mm
Upper Mid Wall Thickness	1-16 positions	+/- 0.001 mm
Lower Mid Wall Thickness	1-16 positions	+/- 0.001 mm
Wall Step		
Dome Depth	Single Point	+/- 0.010 mm

## Technical Specification:

Capabilities	Typical Range
Can Range	202 - 307 body diameters
Can Materials	Aluminium/Steel
Can Height Range	87 - 210 mm
Can Dome Depth Range	9 - 13 mm
Can Wall Thickness Range	0 - 1 mm

Repeatability Performance Data - available upon request

## Benefits to your business

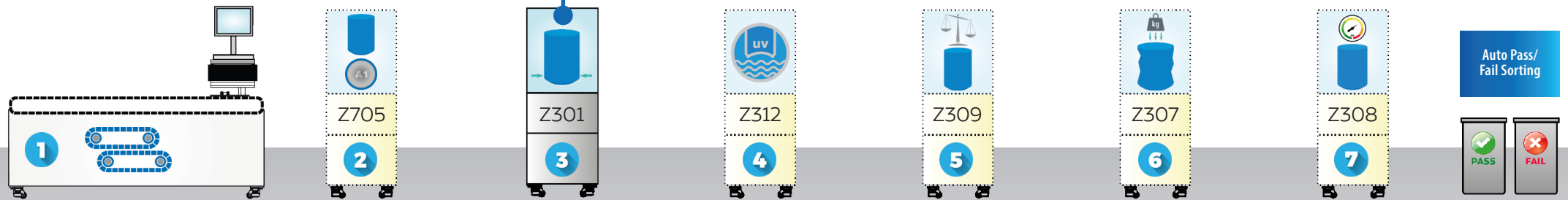
- Speed and accuracy
- Confidence in your production process
- Modular concept to cater for future upgrades
- Cost-effective upgrade path for additional modules to be added
- Fully automated, removing operator bias
- In-line ready. Ideal for wall-to-wall plants, significantly increasing throughput and data collection

[Click here to view the video](#)



# Customise your Gauge

Our modular gauge setups are unique and allow you to customise your gauge as and when you require, giving you the flexibility to ensure you have a total quality solution.



**1** Start with the standard **Z301 Trimmed Can Inspection Front End Gauge**

**2** Add any of the below optional modules at any time.

**1 Multi-Lane Input Conveyor**

- Lane capability typically 24 x 211 body dia. can
- Single lane - 6 options available
- Automatic in-line configuration for each lane available

**2 Body Maker Recognition Module**

- For in-line testing
- Detects bodymaker ID prior to measurement cycle to allow for bodymaker traceability

**3 Additional Options**

- **In-Cycle Calibration module** - for in-line inspection
- **Outer Body Dia. Inspection module** - 1-8 rotational positions
- **Accuracy:** +/- 0.025mm

**4 Vision Module (For detailed information see Z312)**

- Quality percentage of UV Base RIM Coat (BRC) lacquer presence

**5 Trimmed Can Weight Module**

- Determines can weight
- Meets industry standard
- **Resolution:** 0.001g

**6 Axial Load Module**

- Determines the maximum axial load force that can be applied prior to container failure
- **Accuracy:** +/- 10N

**7 Dome Growth/Dome Reversal Module**

- Provides detailed information about the overall change in length of can when pressure is applied and subsequently removed
- **Accuracy:** +/- 0.10mm
- **Accuracy:** +/- 0.05 bar