

Z703 Base Rim Coat (BRC) Presence Bench-Top Gauge

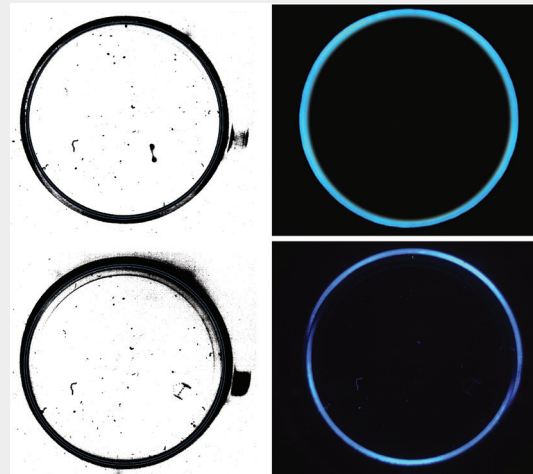
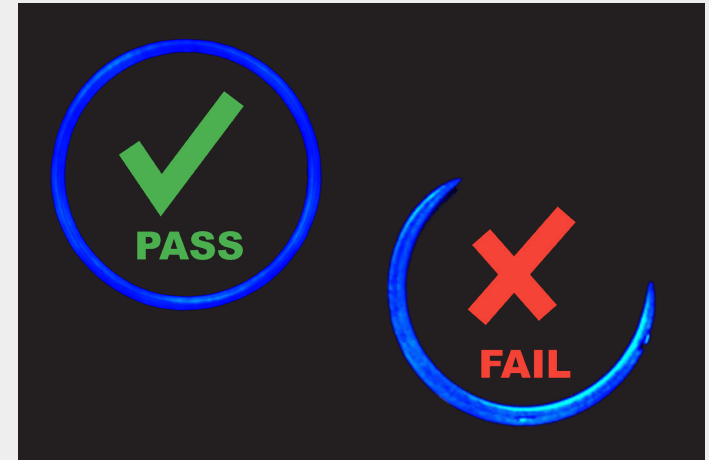


The Z703 UV BRC Presence Bench-Top Gauge tests for UV/BRC presence in one system.

Key Features

- > UV Base Rim Coat Presence
- > UV Base Rim Coat % Coverage

The Z703 works together and compliments Torus' **Z340 Coating Analyser** range to provide Base Rim Coat Distribution Inspection Analysis and quickly identifies the application of UV base rim coat presence, indicating in split seconds a percentage coverage based on parameters set within Torus' GaugeXplorer software. The live report instantly denotes if the rim coat has either been under applied or damaged.



ELECTRICITY
100-240 Volts / 50-60 Hz

COMPRESSED AIR
N/A

WEIGHT
Estimated 30kg

DIMENSIONS
(W) 391mm x (H) 362mm
(D) 543mm

Benefits to your business

- > Helps eliminate hazards from the manual abrasive copper sulphate checks typically carried out to measure Rim Coat
- > Significantly reduces labour time
- > Increases operator productivity
- > Overcomes human error
- > Reducing HFI (Hold for Inspection) customer complaints

Click [here](#) to view the video

