

# PRODUCT INFORMATION SHEET

## Z301 Universal (Trimmed & Finished) Can Gauge

email: [tms.sales@torus-group.com](mailto:tms.sales@torus-group.com)  
[www.torus-group.com](http://www.torus-group.com)

The NEW Universal Trimmed & Finished Can Inspection machine from Torus Measurement Systems defines the standard for Dimensional inspection of Beverage / Beer Cans.

The Measurement Cycle is initiated via the PC running the TMS GaugeXplorer Measurement and Machine Control Software.

Available in either Semi-Automatic (Manually Loaded), Automatic (Conveyor Loaded) or In-Line Variants, these machines can be supplied for a single fixed Body diameter of Can, or for facilities producing multiple body diameters, manual or automatic "Changeover Capability" can be specified.

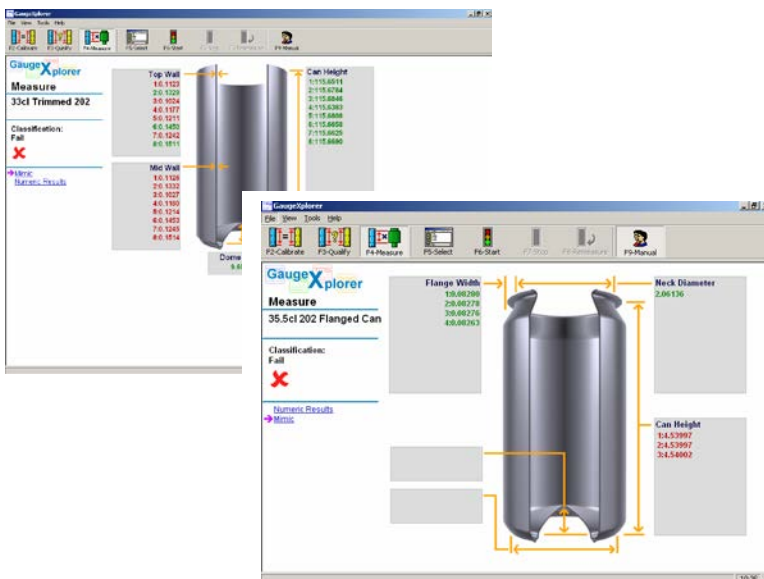
Typically supplied with the capability to measure 3 can heights, additional heights may also be specified or retrofitted at a later date in the field.

With its Modular design concept, a host of Options may also be specified to complement your inspection requirements.



GaugeXplorer

"Built on 10 years of product development, this machine has been proven the number one choice for leading packaging manufacturers around the world."



# PRODUCT INFORMATION SHEET

## Z301 Universal (Trimmed & Finished) Can Gauge

email: [tms.sales@torus-group.com](mailto:tms.sales@torus-group.com)  
[www.torus-group.com](http://www.torus-group.com)

The Torus Measurement Systems Modular design construction gives complete flexibility when specifying your requirements. Our extensive list of options ensures a 'best fit' solution to your inspection needs.

Universal Can Gauge Options Include:-

- Weigh Station Option
- In-cycle Calibration (Trimmed Station)
- Axial Load / Dome Reversal Stations
- Dome Reform Tooling Option
- Multi Lane Input Conveyor
- Gravity Feed Input
- Pass / Fail sorting
- Industrial PC / Keyboard
- Network Interfacing



Using High Precision transducer technology and Certified Calibration Setting Masters from our UKAS accredited laboratory, you can be assured of accurate, repeatable and traceable measurement of your finished cans, 24 hours a day, seven days a week.....

### TECHNICAL SPECIFICATION



Features Measured	Accuracy	Component Range
Top Wall Thickness	+/- 0.001mm (+/- 0.00004")	Body Diameter (202) - (307)
Mid Wall Thickness	+/- 0.001mm (+/- 0.00004")	Repeatability
Trimmed Can Height	+/- 0.010mm (+/- 0.0004")	0.002mm (0.00008")
Dome Depth	+/- 0.010mm (+/- 0.0004")	0.002mm (0.00008")
Flange Width (4 Pos)	+/- 0.010mm (+/- 0.0004")	0.025mm (0.00098")
Can Height (3 Pos)	+/- 0.010mm (+/- 0.0004")	0.025mm (0.00098")
Internal Neck Dia.	+/- 0.010mm (+/- 0.0004")	0.030mm (0.0012")
Reform Dome Dia. (opt.)	+/- 0.010mm (+/- 0.0004")	0.030mm (0.0012")
Reform Dome Depth (opt.)	+/- 0.010mm (+/- 0.0004")	0.025mm (0.00098")
Axial Load (opt.)	+/- 10,00N	0.025mm (0.00098")
Dome Reversal (opt.)	+/- 5kPa	

Cycle Time: Approx. 30 seconds per can (at 4 Positions)



### Torus Measurement Systems Limited

Nedge Hill Science Park, Telford  
 Shropshire, TF3 3AJ United Kingdom  
 Tel: 44 (0) 1952 210020  
 Fax: 44 (0) 1952 299804  
 Email: [tms.sales@torus-group.com](mailto:tms.sales@torus-group.com)

### Torus Americas, Inc.

150 Capital Drive, Suite 340-350  
 Golden, Colorado, 80401, USA  
 Tel: 1-303-384-0279  
 Fax: 1-303-279-7551  
 Email: [tai.sales@torus-group.com](mailto:tai.sales@torus-group.com)